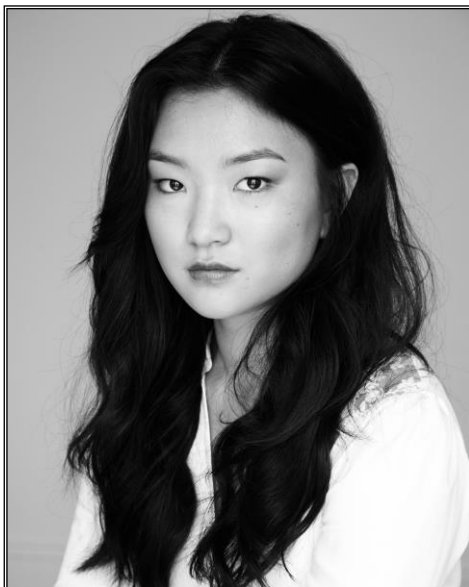


SHANAHAN



MICHELLE LIM DAVIDSON | Actor

FILM

Year	Production / Character	Director	Company
2015	GOLDSTONE <i>May</i>	Ivan Sen	Bunya Productions
2015	PANDEMONIUM: THE WIGGLES FILM <i>Natalie News</i>	Ben Elton	Invisible Republic TV

TELEVISION

Year	Production/Character	Director	Company
2024	THE NEWSREADER S3 <i>Noelene</i>	Emma Freeman	Werner Film Productions
2022	THE NEWSREADER S2 <i>Noelene</i>	Emma Freeman	Werner Film Productions
2022	AFTER THE VERDICT <i>Clara</i>	Various	Subtext Pictures/Channel 9
2020	THE NEWSREADER <i>Noelene</i>	Emma Freeman	Werner Film Productions
2020	THE SECRET SHE KEEPS <i>Rani</i>	Catherine Millar	Lingo Pictures
2019	BLACK COMEDY: SERIES 4 <i>Various</i>	Various	Scarlett Pictures
2013 - Present	PLAY SCHOOL <i>Presenter</i>	Various	ABC TV

Shanahan Management Pty Ltd

PO Box 1509 | Darlinghurst NSW 1300 Australia | ABN 46 001 117 728
Telephone 61 2 8202 1800 | Facsimile 61 2 8202 1801 | admin@shanahan.com.au

SHANAHAN

2017	GET KRACK!N <i>Penny Wong</i>	Hayden Guppy	Hitmaker Studios /ABC TV
2016	DOCTOR DOCTOR <i>Becky</i>	Various	Nine Network
2016	TOP OF THE LAKE: CHINA GIRL <i>Linda</i>	Jane Campion	See-Saw Films
2015	UTOPIA: SERIES 2 <i>Amy</i>	Rob Sitch	Working Dog
2015	JAY'S JUNGLE - US PILOT <i>Ranger Tess</i>	Justin Schneider	Ambience Entertainment
2014	BIG TED'S BIG ADVENTURE <i>Presenter</i>	Sarah Darbro	ABC TV
2013	PACIFIC COVE (PILOT) <i>Ling</i>	Tony Rogers	Mad Dan Productions
2013	UTOPIA: SERIES 1 <i>Amy</i>	Rob Sitch	Working Dog
2013	UTOPIA: PILOT <i>Amy</i>	Rob Sitch	Working Dog
2011	LIVE FROM PLANET EARTH <i>Ensemble</i>	Ben Elton	Fremantle Media

THEATRE

Year	Production/Character	Director	Company
2023	ON THE BEACH <i>Mary Holmes</i>	Kip Williams	Sydney Theatre Company
2020	TORCH THE PLACE <i>Natalie</i>	Dean Bryant	Melbourne Theatre Company
2019	BANGING DENMARK <i>Anne Toft</i>	Jessica Arthur	Sydney Theatre Company
2019	HOW TO RULE THE WORLD <i>Zaza</i>	Paige Rattray	Sydney Theatre Company
2018	THE FEATHER IN THE WEB <i>Lily</i>	Ben Winspear	Griffin Theatre Company
2018	AN IDEAL HUSBAND <i>Miss Mabel Chiltern</i>	Dean Bryant	Melbourne Theatre Company
2018	TOP GIRLS <i>Lady Nijo / Win</i>	Imara Savage	Sydney Theatre Company

Shanahan Management Pty Ltd

PO Box 1509 | Darlinghurst NSW 1300 Australia | ABN 46 001 117 728
Telephone 61 2 8202 1800 | Facsimile 61 2 8202 1801 | admin@shanahan.com.au

SHANAHAN

2017	THE PLANT <i>Claire/Gina</i>	Kit Brookman	Ensemble Theatre Company
2016	POWER PLAYS <i>Cast</i>	Paige Rattray	Sydney Theatre Company
2015	PLAY SCHOOL LIVE: ONCE UPON A TIME <i>Presenter</i>	Angela Moore	Kid's Promotion
2014	PLAY SCHOOL LIVE - PRINCE OF BEARS <i>Presenter</i>	Angela Moore	ABC/Kids Promotions
2013	SEMINAR <i>Izzy</i>	Anna Crawford	Ensemble Theatre
2013	THE LARAMIE PROJECT <i>Various</i>	Sarah Goodes	STC (Ed)
2013	PLAY SCHOOL LIVE: HUMPTY'S SHOW TIME <i>Presenter</i>	Angela Moore	ABC/Kid's Promotions
2011	JUST FOR LAUGHS COMEDY FESTIVAL WITH JOHN CLEESE <i>Jennifer</i>	Andy Nulman	John Cleese
2010	THE COMEDY OF ERRORS <i>Dromio of Syracuse</i>	Adam Cook	WAAPA
2010	TALKING TO TERRORISTS <i>Nodira</i>	Crispin Taylor	WAAPA
2010	HAMLET <i>Guildenstern/Player Queen</i>	Aarne Neeme	WAAPA
2010	THE TRIAL <i>The Whipper</i>	Michael Jenn	WAAPA
2010	ATTEMPTS ON HER LIFE <i>Ensemble</i>	Chris Edmund	WAAPA
2009	THE SEAGULL <i>Masha</i>	Marcelle Schmitz	WAAPA
2009	UNDER MILKWOOD <i>Mrs Pugh/Mrs Beynon</i>	Ross McGregor	WAAPA
2009	IVANOV <i>Gavrila</i>	Nic Papademetriou	WAAPA
2008	FAR AWAY <i>Ensemble</i>	John Sheedy	Black Swan

Shanahan Management Pty Ltd

PO Box 1509 | Darlinghurst NSW 1300 Australia | ABN 46 001 117 728
Telephone 61 2 8202 1800 | Facsimile 61 2 8202 1801 | admin@shanahan.com.au

SHANAHAN

SHORT FILM

Year	Production/Character	Director	Company
2010	ON A BREAK <i>Sasha</i>	Dave Frizzel	WA Screen Academy
2010	"XO" <i>Sayuri</i>	Eva Randohr	WA Screen Academy

EDUCATION

Year	Institution
2010	Western Australian Academy of Performing Arts (WAAPA) <i>Perth, Australia</i>

AWARDS & NOMINATIONS

Year	Award/Nomination	Production
2024	TV Week Silver Logie Nomination <i>Best Supporting Actress</i>	THE NEWSREADER
2021	AACTA Nomination <i>Best Supporting Actress in a Television Drama</i>	THE NEWSREADER

INDUSTRY COMMITTEES

2023	Griffin Studio Artist (Griffin Theatre Company)
------	---

Shanahan Management Pty Ltd

PO Box 1509 | Darlinghurst NSW 1300 Australia | ABN 46 001 117 728

Telephone 61 2 8202 1800 | Facsimile 61 2 8202 1801 | admin@shanahan.com.au