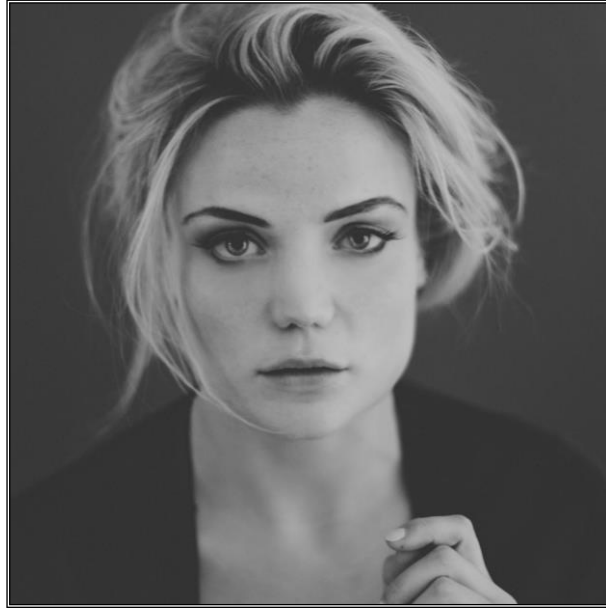


SHANAHAN



ANNA SAMSON | Actor

FILM

Year	Production/Character	Director	Company
2020	Working Title: IMPALA <i>Sheila Boyce</i>	Kurt Wimmer	ANVL Entertainment
2016	36 QUESTIONS <i>Gabrielle</i>	Janis Coffey	Producers: Daniel James Bevan & Janis Coffey
2015	CRIME & PUNISHMENT <i>Sonya</i>	Andrew O'Keefe	Apocalypse Films
2015	WHAT IF IT WORKS? <i>Grace</i>	Romi Trower	McKinnon Creative
2015	LION <i>Cute Bar Maid</i>	Garth Davis	See-Saw Films

TELEVISION

Year	Production/Character	Director	Company
2020	HOME AND AWAY <i>Mia Anderson</i>	Various	Seven Network
2019	HALIFAX: RETRIBUTION <i>Smithy</i>	Various	Lonehand Productions
2018	JACK IRISH <i>Kendra Raspovic</i>	Various	Easy Tiger Productions
2017	DEAD LUCKY <i>Anna Jamison</i>	David Caeser	SBS TV

Shanahan Management Pty Ltd

PO Box 1509 | Darlinghurst NSW 1300 Australia | ABN 46 001 117 728

Telephone 61 2 8202 1800 | Facsimile 61 2 8202 1801 | admin@shanahan.com.au

SHANAHAN

2017	WAKE IN FRIGHT <i>Mick</i>	Kriv Stenders	Lingo Pictures
2016	THE LEFTOVERS <i>Young Woman in Beret</i>	Various	Warner Bros Television
2015	HUNTERS <i>Steph Le Guin</i>	Various	Matchbox Pictures, Universal Cable Productions & Valhalla Entertainment
2015	DR. BLAKE MYSTERIES <i>Wendy Smith</i>	Various	December Media
2014	WINNERS & LOSERS <i>Hayley Baxter</i>	Various	Seven Network Operations
2012	OFFSPRING <i>Claire</i>	Shirley Barrett	Southern Star / Channel 10
2011	CONSPIRACY 365 <i>Natalie</i>	Various	Movie Channel Network

THEATRE

Year	Production/Character	Director	Company
2022	ANATOMY OF A SUICIDE <i>Anna</i>	Shane Anthony	Seymour / Sugary Rum Productions & Chopt Logic
2022	OPENING NIGHT <i>Myrtle (understudy)</i>	Carissa Licciardello	Belvoir
2019	ANATOMY OF A SUICIDE <i>Carol</i>	Shane Anthony	Redline / The Old Fitz
2018	LOVE <i>Tanya</i>	Rachel Chant	Darlinghurst Theatre
2018	BLISS <i>Honey Barbara</i>	Matthew Lutton	Malthouse & Belvoir
2016	SKYLIGHT <i>Kyra Hollis</i>	Dean Bryant	Melbourne Theatre Company
2015	BIRDLAND <i>Marnie/Lucy/Sophie/Nicola</i>	Leticia Caceres	Melbourne Theatre Company
2015	WET HOUSE <i>Kerry</i>	Brett Cousins	Red Stitch
2014	THE SUBLIME <i>Amber</i>	Sam Strong	Melbourne Theatre Company
2014	THE BITTER TEARS OF PETRA VON KANT	Gary Abrahams	Theatre Works: St Kilda
2013	ARDEN VS. ARDEN	Benedict Hardie	Hayloft Project

Shanahan Management Pty Ltd

PO Box 1509 | Darlinghurst NSW 1300 Australia | ABN 46 001 117 728
Telephone 61 2 8202 1800 | Facsimile 61 2 8202 1801 | admin@shanahan.com.au

SHANAHAN

2012	POMPEII LA <i>Various</i>	Matthew Lutton	Malthouse Theatre
2012	THE HERETIC <i>Phoebe</i>	Matthew Scholten	Melbourne Theatre Company
2011	DAY ONE, AT HOTEL. EVENING <i>Rose Darby</i>	Gary Abrahams	Red Stitch
2011	AFTER ALL THIS <i>Performer</i>	Marcel Dorney	Melbourne Fringe
2011	RUBEN GUTHRIE <i>Zoya</i>	Brendan Cowell	Red Stitch
2010	O'HORO, THE DANCE OF DEATH <i>Achilles</i>	Robert Draffin	VCA
2010	GHETTO <i>Lina The Dummy</i>	Harald Furham	VCA
2009	INNOCENCE – THE LIFE AND DEATH OF CARAAGGION <i>Lena</i>	Kirsten Von Bibra	VCA
2007	ALICE DREAMING <i>Alice</i>	Chris Mead	Australian Theatre For Young People

SHORT FILM

Year	Production/Character	Director	Company
2015	TANGLEWOOD <i>Sarah</i>	Jordan Prosser	Producer: Steven McKinnon

WEB SERIES & ONLINE

Year	Production/Character	Director	Company
2016	LITTLE ACORNS <i>Anna</i>	Trudy Hellier, Maria Theodorakis, Chris Benz	Pockettv P/L

EDUCATION

Year	Institution
2010	Victorian College of the Arts (VCA) <i>Melbourne, Australia</i>

AWARDS

Year	Award	Production
2019	Sydney Theatre Award Nomination for Best Ensemble	ANATOMY OF A SUICIDE
2019	Broadway World Nomination for Best Actress in a Play	ANATOMY OF A SUICIDE
2018	GLUG Nomination for Most Outstanding Performance by An Actress in a Leading Role	LOVE

Shanahan Management Pty Ltd

PO Box 1509 | Darlinghurst NSW 1300 Australia | ABN 46 001 117 728
Telephone 61 2 8202 1800 | Facsimile 61 2 8202 1801 | admin@shanahan.com.au

SHANAHAN

2018	Special Jury Prize for Best Emerging Performer at The Ozflix Independent Australian Film Awards	WHAT IF IT WORKS?
2016	Helpmann Award Nomination for Best Female Actor in a Supporting Role in a Play	BIRDLAND
2015	Green Room Award Nomination for Best Female Actor in a Theatre Company Production	WET HOUSE
2011	Melbourne Fringe Festival Award for Best Performance	AFTER ALL THIS
	Melbourne Green Room Award for Best Ensemble	AFTER ALL THIS
2010	John Tallis Award for Excellence	Victorian College of The Arts